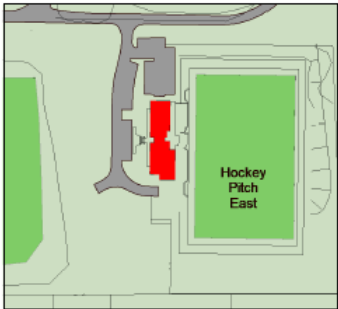
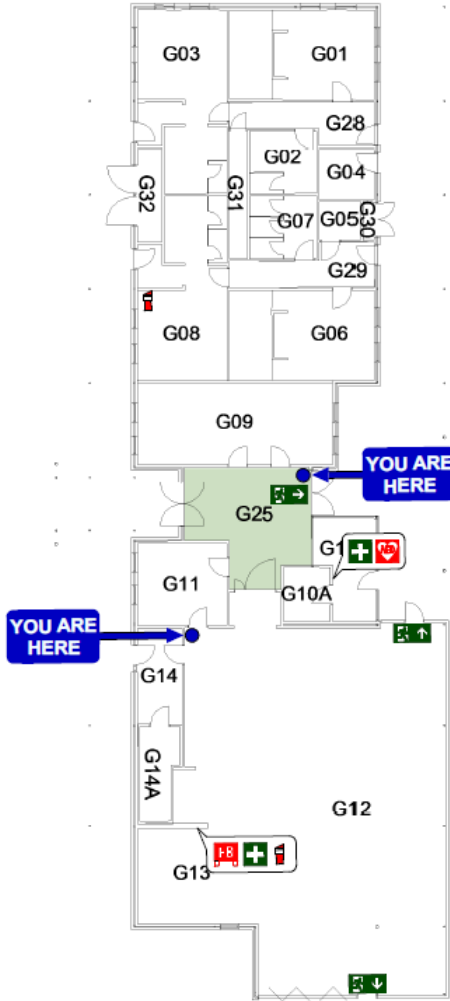
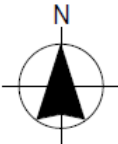


# SUPERTURF CLUBHOUSE

## EVACUATION DIAGRAM



**Assembly Area**



**THE UNIVERSITY OF WESTERN AUSTRALIA**  
**IN AN EMERGENCY**

DIAL  
6488 2222

2222 from internal phones  
 For life threatening emergencies  
 call 000 then 6488 2222  
 Give type of emergency, location,  
 your name and contact details

B638 - McGillivray Superturf Clubhouse  
 Clubhouse  
 Ground Floor

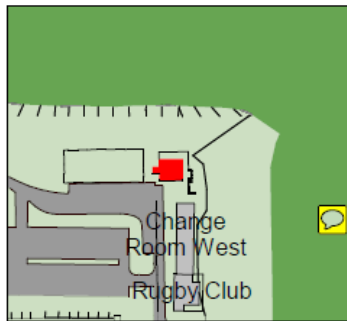
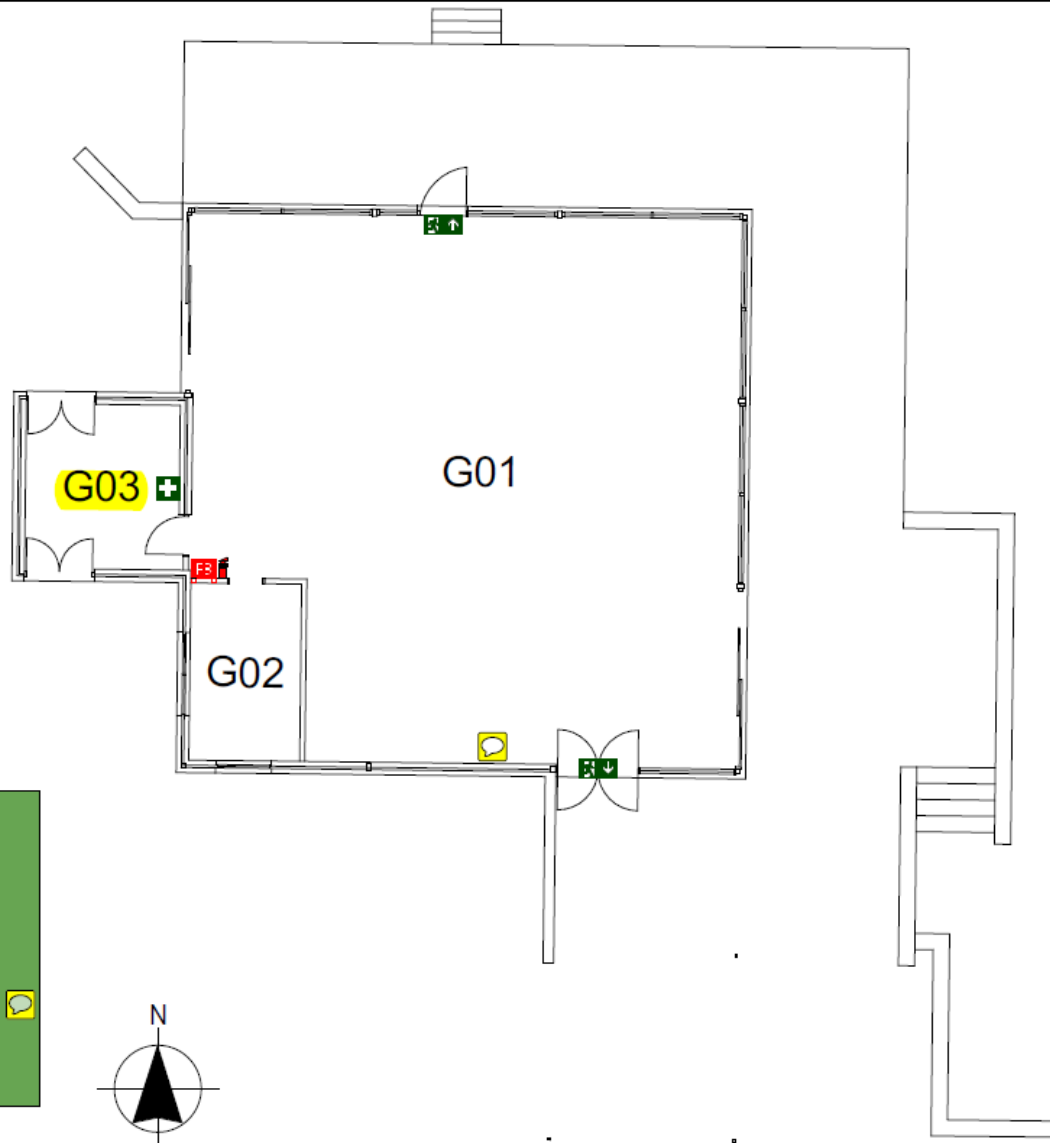
- Evacuation Procedures**
- Raise the alarm (if not already sounding)
  - Ensure the safety of self and others
  - Contact Security (2222 or local procedure) and the Building Warden
  - Evacuate to the Assembly Area
  - Close doors
  - Do not use lifts
  - Follow instructions of Wardens
  - Remain in Assembly Area
  - Do not re-enter until 'All Clear' is given by the building Warden or DFES

- Legend**
- Path of Travel
  - Assembly Area
  - Emergency Exit
  - First Aid Kit
  - Powder Extinguisher
  - Automated external defibrillator
  - Fire Blanket

VALIDATION DATE:	01/01/2020
VALIDATION EXPIRY DATE:	01/01/2025
DRAWING No:	638/ED/IGN

# McGILLIVRAY OVAL A.J. WILLIAMS PAVILLION

## EVACUATION DIAGRAM



**Assembly Area**


**THE UNIVERSITY OF  
WESTERN  
AUSTRALIA**  
 IN AN EMERGENCY

**DIAL  
6488 2222**






2222 from internal phones  
 For life threatening emergencies  
 call 000 then 6488 2222  
 Give type of emergency, location,  
 your name and contact details

B630 - McGillivray Oval A.J. Williams  
 Pavillion  
 Ground Floor

### Evacuation Procedures

- Raise the alarm (if not already sounding)
- Ensure the safety of self and others
- Contact Security (2222 or local procedure) and the Building Warden
- Evacuate to the Assembly Area
- Close doors
- Do not use lifts
- Follow instructions of Wardens
- Remain in Assembly Area
- Do not re-enter until 'All Clear' is given by the building Warden or DFES

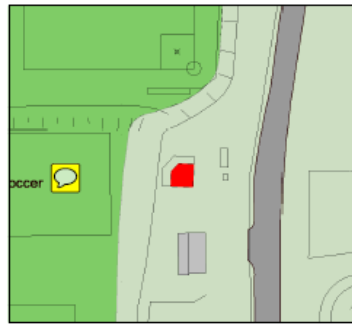
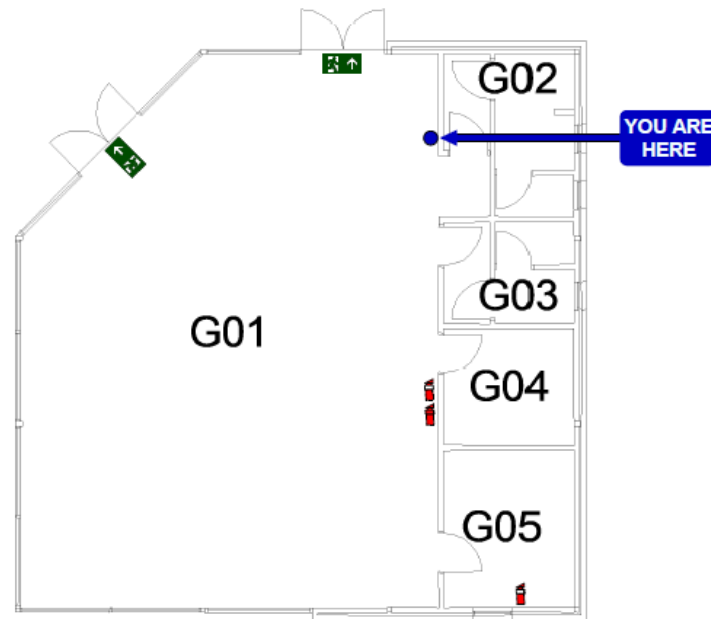
### Legend

-  Assembly Area
-  Emergency Exit
-  First Aid Kit
-  CO<sub>2</sub> Extinguisher
-  Fire Blanket

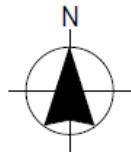
VALIDATION DATE:	01/01/2020
VALIDATION EXPIRY DATE:	01/01/2025
DRAWING No:	630/ED/GN

# McGILLIVRAY BASEBALL/SOCCER CLUBROOM

## EVACUATION DIAGRAM



Assembly Area



THE UNIVERSITY OF  
**WESTERN  
AUSTRALIA**  
IN AN EMERGENCY

**DIAL  
6488 2222**

2222 from internal phones  
For life threatening emergencies  
call 000 then 6488 2222  
Give type of emergency, location,  
your name and contact details

B636 - McGillivray Baseball\_Soccer  
Clubroom  
Ground Floor

### Evacuation Procedures

- Raise the alarm (if not already sounding)
- Ensure the safety of self and others
- Contact Security (2222 or local procedure) and the Building Warden
- Evacuate to the Assembly Area
- Close doors
- Do not use lifts
- Follow instructions of Wardens
- Remain in Assembly Area
- Do not re-enter until 'All Clear' is given by the building Warden or DFES

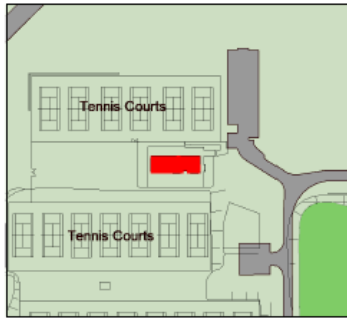
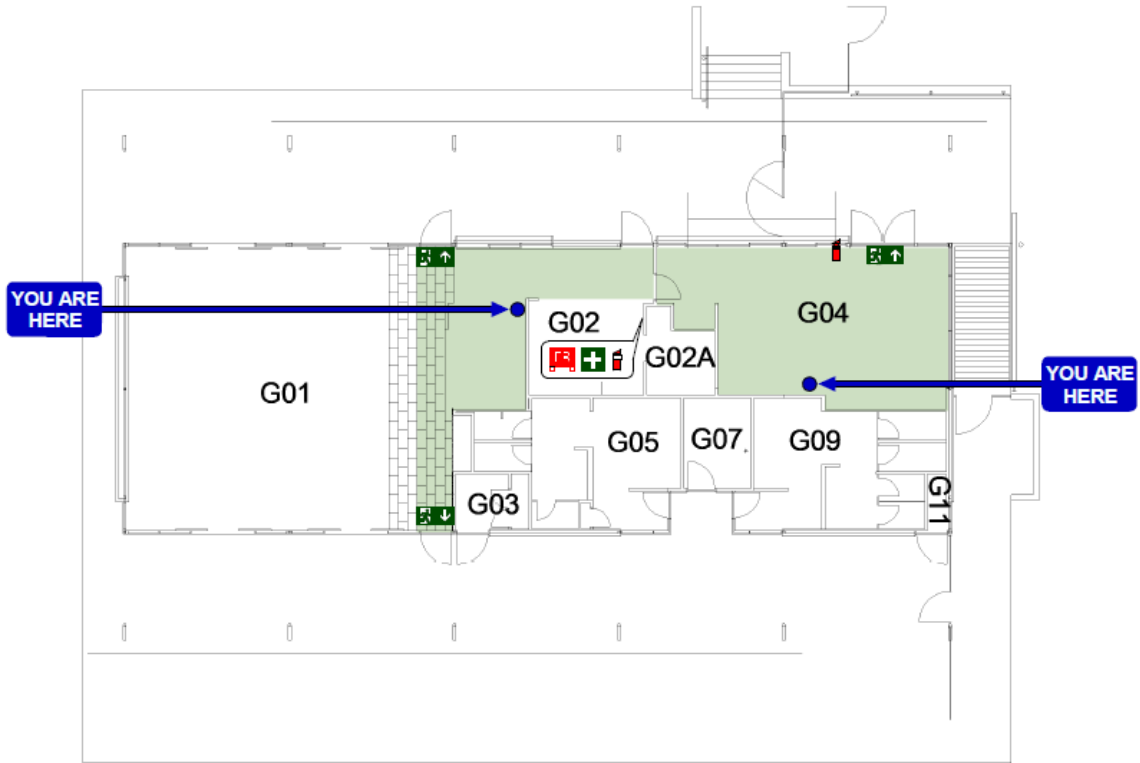
### Legend

- Path of Travel
- Assembly Area
- Emergency Exit
- Powder Extinguisher
- Water Extinguisher

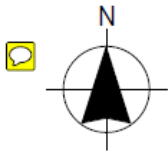
VALIDATION DATE:	01/01/2020
VALIDATION EXPIRY DATE:	01/01/2025
DRAWING No:	636/EDI/GN

# McGILLIVRAY TENNIS CLUBROOMS

## EVACUATION DIAGRAM



Assembly Area




**THE UNIVERSITY OF WESTERN AUSTRALIA**  
**IN AN EMERGENCY**  
**DIAL**  
**6488 2222**  
 2222 from internal phones  
 For life threatening emergencies  
 call 000 then 6488 2222  
 Give type of emergency, location,  
 your name and contact details








B660 - McGillivray Tennis Clubrooms

Ground Floor

**Evacuation Procedures**

- Raise the alarm (if not already sounding)
- Ensure the safety of self and others
- Contact Security (2222 or local procedure) and the Building Warden
- Evacuate to the Assembly Area
- Close doors
- Do not use lifts
- Follow instructions of Wardens
- Remain in Assembly Area
- Do not re-enter until 'All Clear' is given by the building Warden or DFES

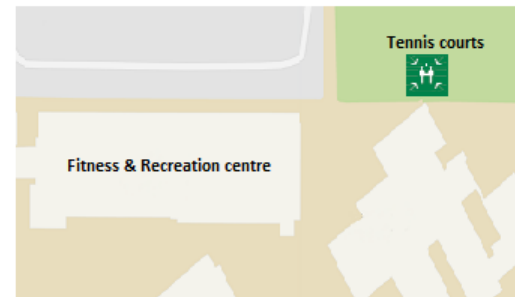
**Legend**

-  Path of Travel
-  Assembly Area
-  Emergency Exit
-  First Aid Kit
-  CO<sub>2</sub> Extinguisher
-  Powder Extinguisher
-  Fire Blanket

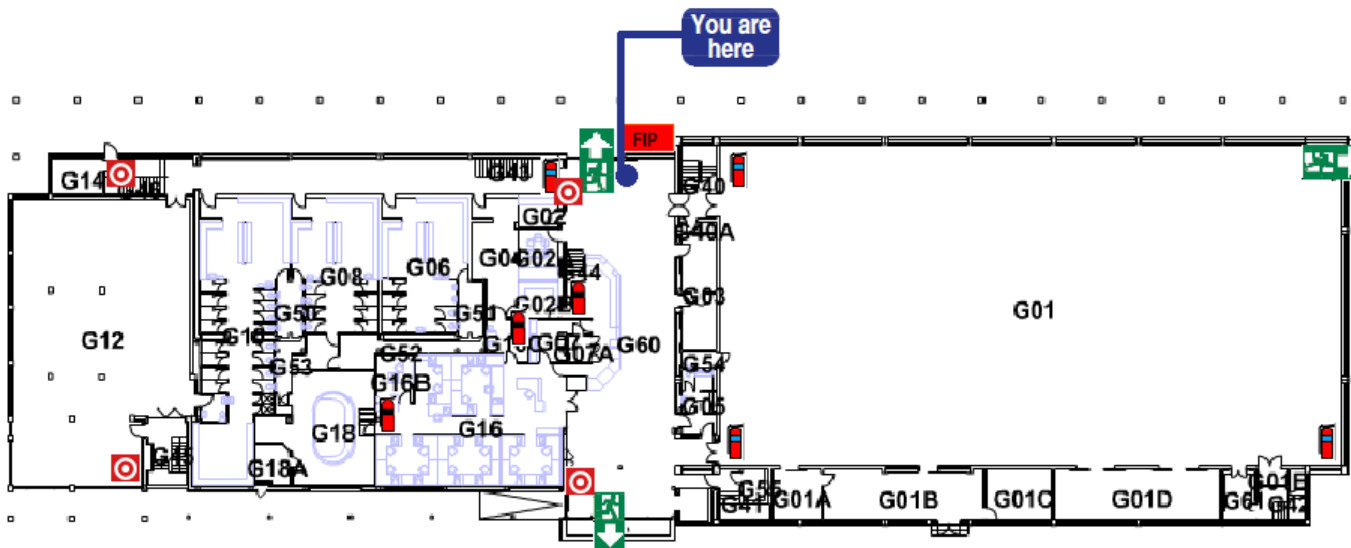
VALIDATION DATE:	01/01/2020
VALIDATION EXPIRY DATE:	01/01/2025
DRAWING No:	660/ED/GN

# UWA FITNESS AND REC CENTRE

## EVACUATION DIAGRAM



Assembly Area



Ground floor



In An Emergency

**DIAL  
2222**

02222 internal phones

6488 2222 from other phones  
(Should '000' be called always, follow up with a phone call to UWA Security on 2222)

University of Western Australia  
Fitness and Recreation Centre

### Evacuation Procedures

- Raise the alarm (if not already sounding).
- Ensure the safety of self and others.
- Contact Security (2222 or local procedure) and the Building Warden.
- Evacuate to the Assembly Area.
- Close doors.
- Do not use lifts.
- Follow instructions of Wardens.
- Remain in Assembly Area.
- Do not re-enter until All Clear is given by the building Warden or DEFS.

### Legend

- Fire Indicator Panel
- Exit
- CO<sub>2</sub> Extinguisher
- Water Extinguisher
- Assembly area:  
Tennis courts located North-East of the centre
- Break glass unit

DATE ISSUED: 28.06.2016

VALIDATION DATE:

DRAWING No:

# RF BRINDLEY RUGBY CLUB

## EVACUATION DIAGRAM



In An Emergency

# DIAL 2222

(UWA Security)  
2222 internal phones  
6488 2222 other phones

### Important Information

- Emergency: 000
- Sir Charles Gairdner Hospital: 9346 3333
- Defibrillator Location: Grounds Staff Office (McGillivray Road)

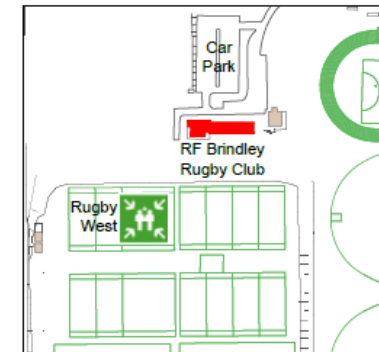
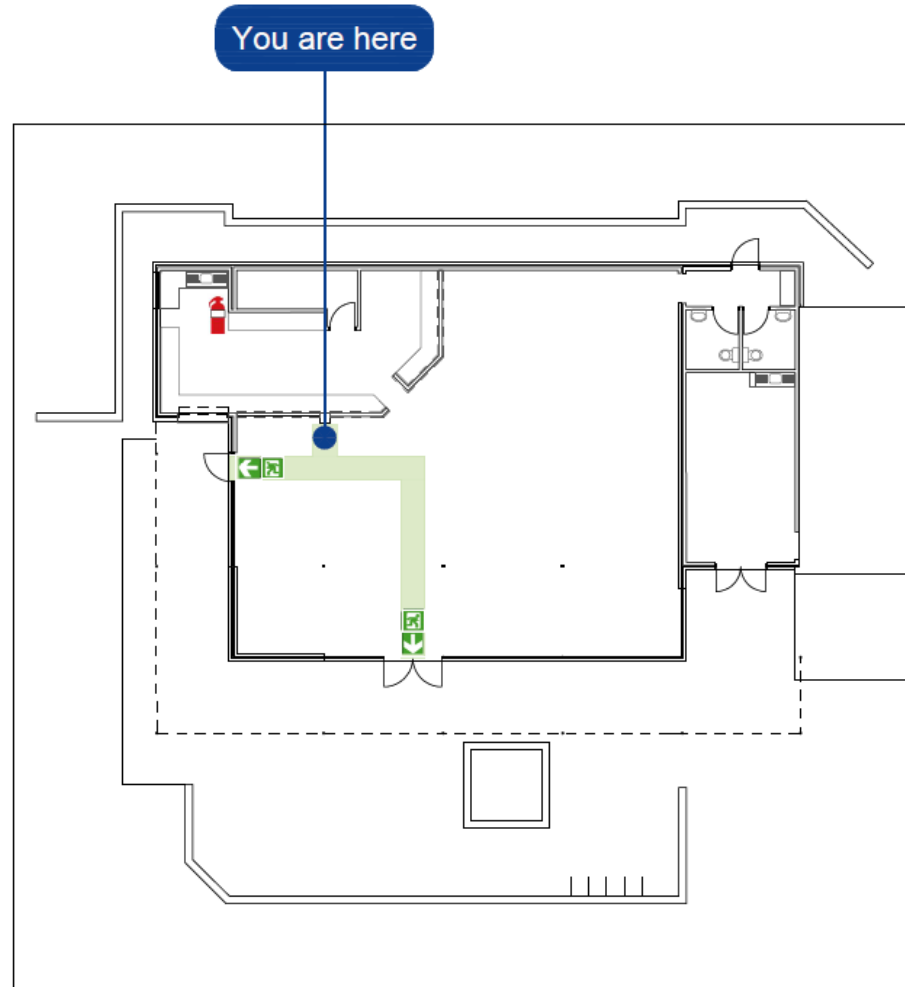
### RF Brindley Rugby Club

#### Evacuation Procedures

- Raise the alarm (if not already sounding).
- Ensure the safety of self and others.
- Contact Security (2222 or local procedure) and the Building Warden.
- Evacuate to the Assembly Area.
- Close doors.
- Do not use lifts.
- Follow instructions of Wardens.
- Remain in Assembly Area.
- Do not re-enter until All Clear is given by the building Warden or DFES.

#### Legend

- Powder extinguisher
- Emergency exit
- Assembly Area
- Path of travel



Assembly Area

