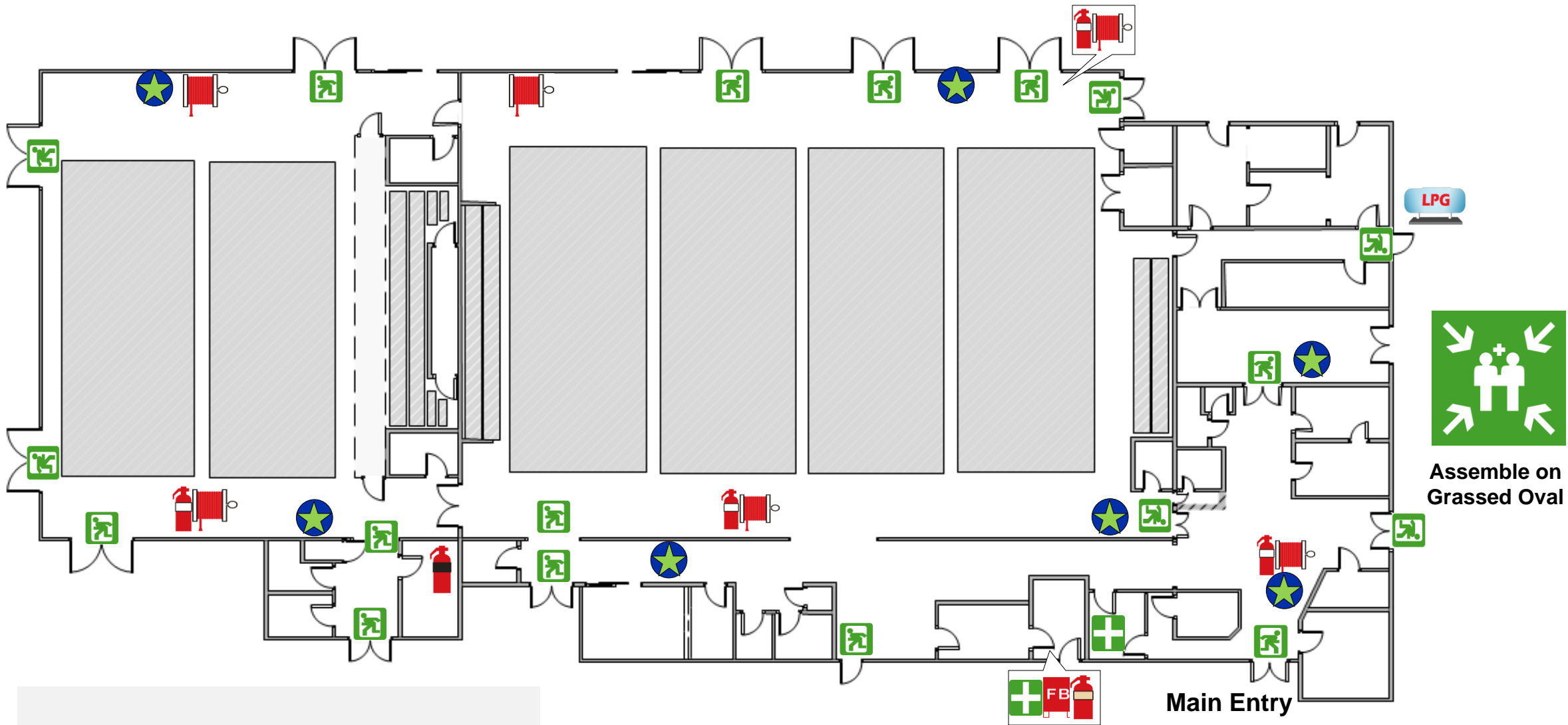




# Evacuation Diagram

Ray Owen Sports Centre  
Gladys Road  
Lesmurdie



Car Park

Main Entry



Assemble on Grassed Oval

## EMERGENCY INFORMATION



In case of emergency contact:

- **Police, Fire or Ambulance (life threatening)** **000**
- **Police (non-urgent)** 131 444
- **SES** 132 500

When directed by your Warden:

- Evacuate the building via the nearest safe exit
- Proceed to the assembly area, or as directed by your Warden or Emergency Services
- Remain at the assembly area until directed by your Warden or Emergency Services

Do not re-enter the building until instructed by your Warden or Emergency Services.

## Legend

- Powder extinguisher
- CO2 extinguisher
- Wet Chemical Extinguisher
- Fire Blanket
- Hose Reel
- LPG Tank
- First aid kit
- Emergency Exit
- Assembly Area
- "You Are Here"



Date: January 2016 Version 1 – Not to Scale Emergency Egress Only